

# Log Cabin



The log cabin consists of 1 center square, 5 light and 5 dark strips.



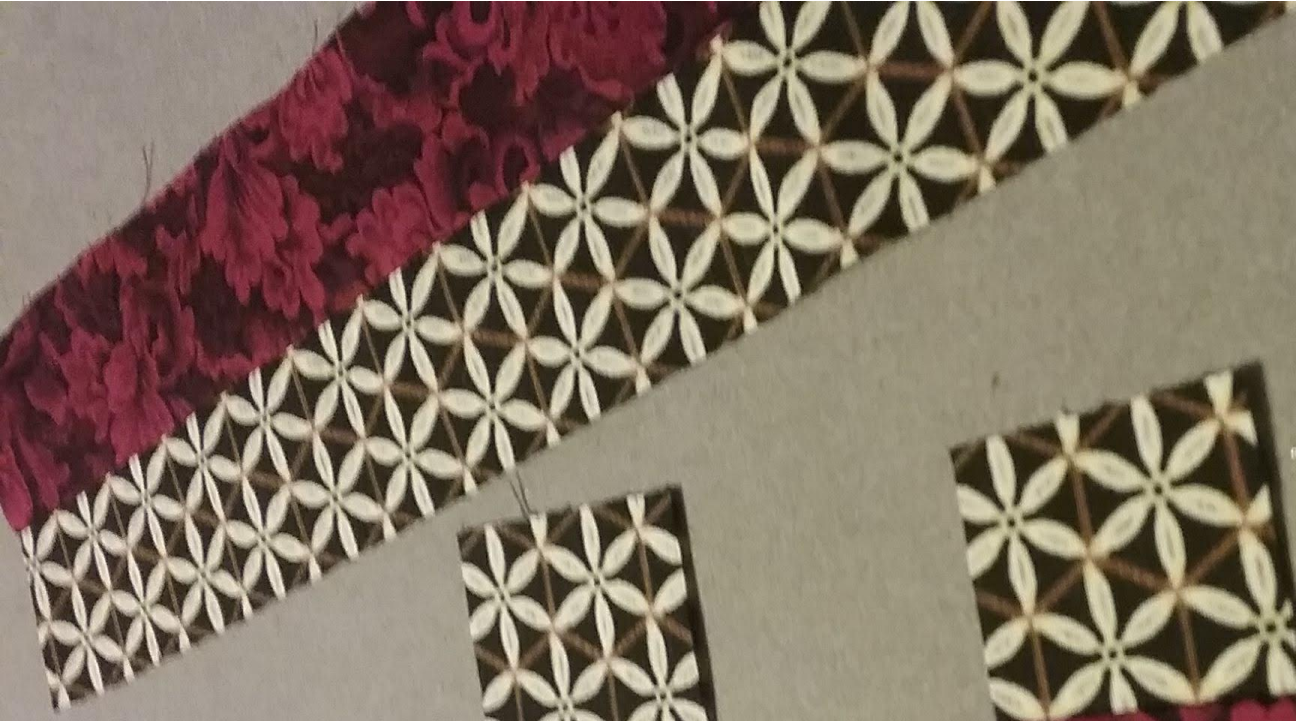
- Strips are cut from rectangle B which is  $1\frac{1}{2}$ " wide and square G which is  $2\frac{1}{2}$ ". I cut the center G square and cut strips across the width of the fabric  $45$ " X  $1\frac{1}{2}$ " wide for the sides.



We will start with the center block and work around it to form the log cabin. On this picture I show that I started with the 1<sup>st</sup> dark and pieced it to the center, right sides together. I then sewed the 1<sup>st</sup> dark to the center and 1<sup>st</sup> dark side by turning the block. Next I rotate the block and add the 1<sup>st</sup> light, then add the 1<sup>st</sup> light again. Next I rotate the block and sew the 2<sup>nd</sup> dark , rotate the block and sew the 2<sup>nd</sup> dark again. I continue....

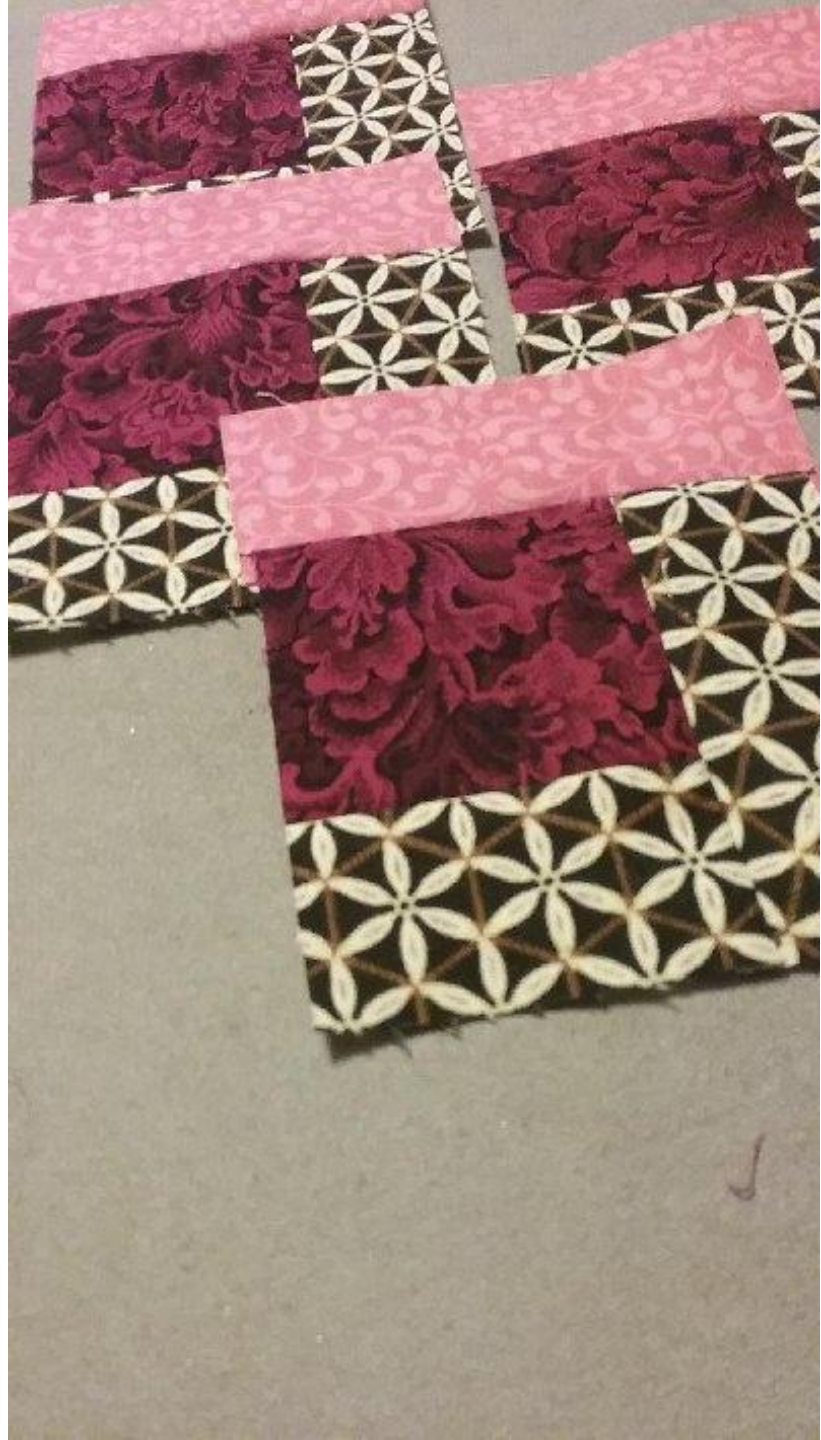


I made a 2 ½" strip X 45" (Size of square G) face up and place the strip for 1<sup>st</sup> dark ( 1 ½") right side together. Stitch the strip together. Stitch the strip with a ¼" seam to start the log cabin. This method will create several blocks. Cut the strip into 1 ½" strips and press seam to dark side.















2<sup>nd</sup> dark is sewn



Sewing the 2<sup>nd</sup> light strip in the 2<sup>nd</sup> position.







- Before you sew the last round of strips to the main block, check the measurement of the main block with a square up ruler. I found I needed to make the last strip a little wider to end up with a 12 ½" square when the log cabin is complete.

